

DeltaShade™ St. Augustine

Shade Tolerance Study

Presented at the New Grasses Field Day

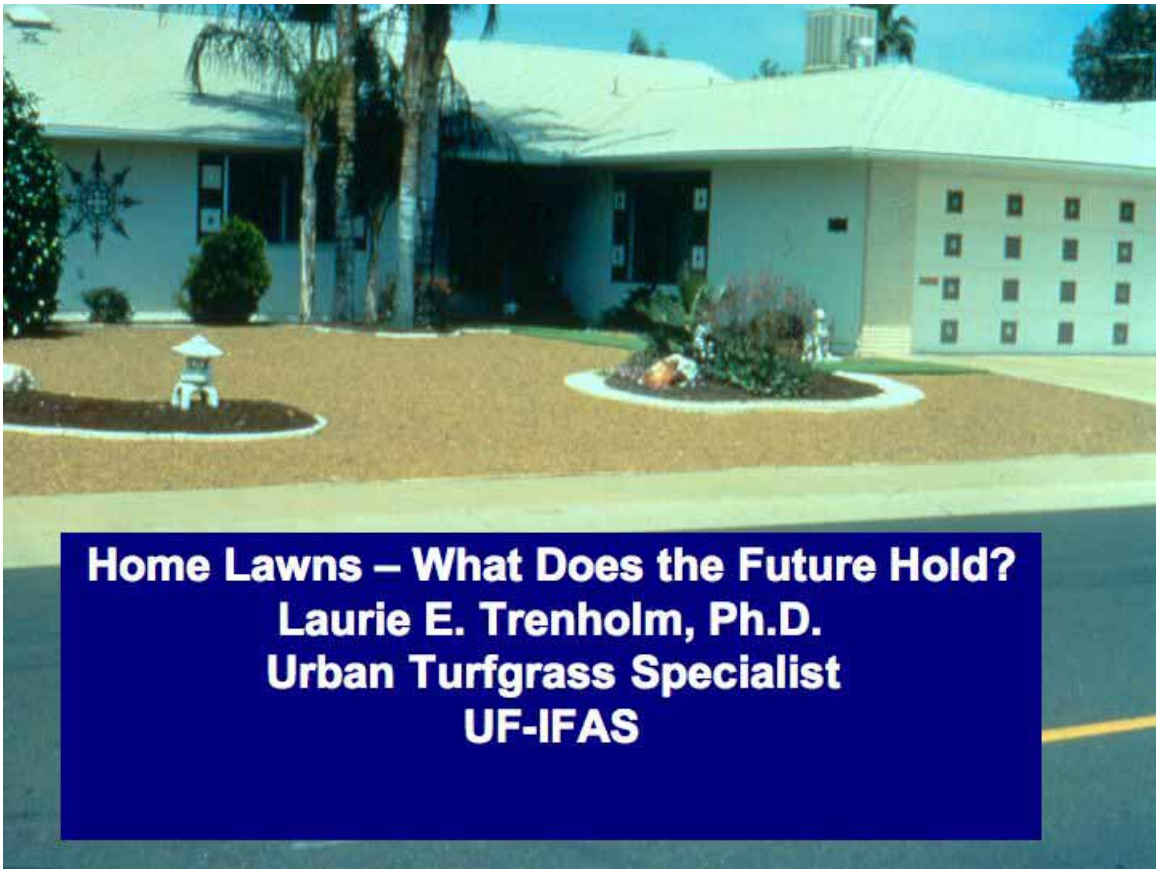
December 6, 2005

Avon Park, Florida

Summary:

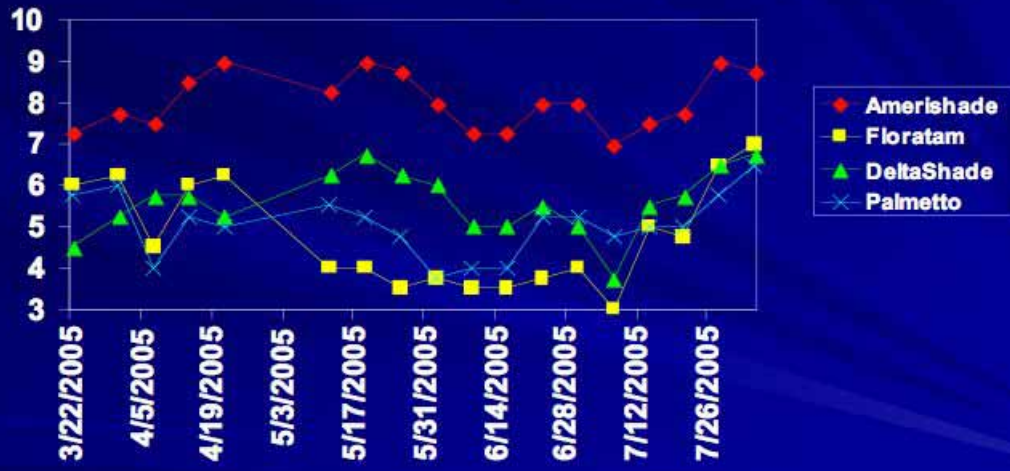
Dr. Laurie Trenholm of the University of Florida delivered the preliminary findings from a study she's conducting on shade tolerance among several varieties of St. Augustine grass. DeltaShade™, a new St. Augustine available through Environmental Turf's network of licensed growers, tested better in up to 70 percent shade than Floratam and Palmetto in weekly quality shade scores.

Only AmeriShade had better shade tolerance. But AmeriShade has little or no cold tolerance.

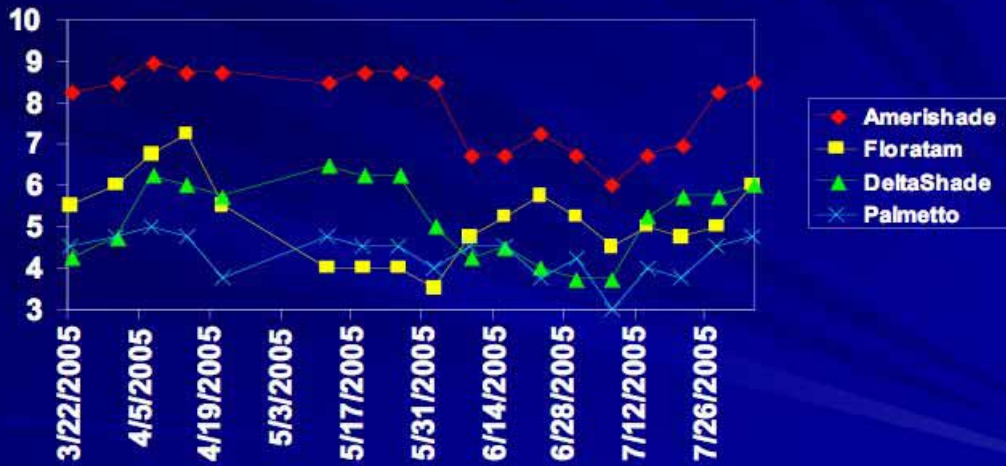


**Home Lawns – What Does the Future Hold?
Laurie E. Trenholm, Ph.D.
Urban Turfgrass Specialist
UF-IFAS**

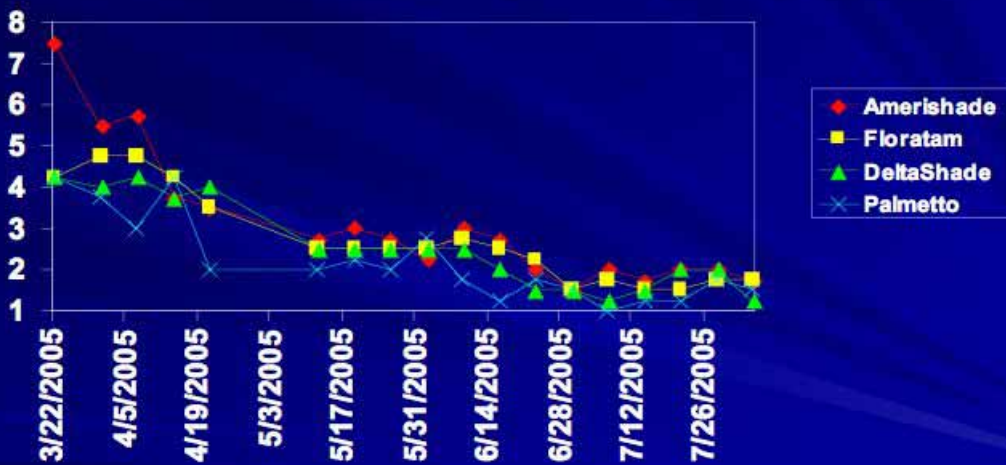
Weekly Quality Scores 30% Shade



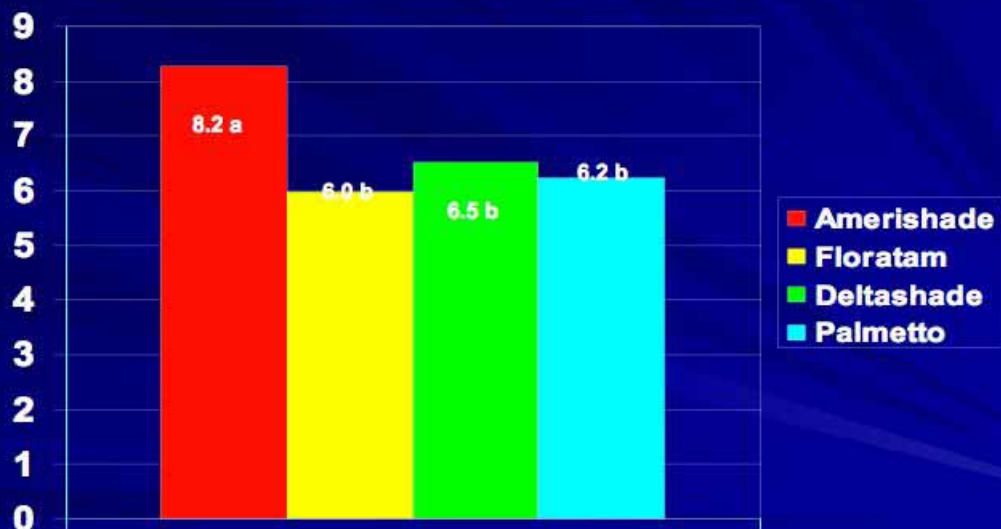
Weekly Quality Scores 50% Shade



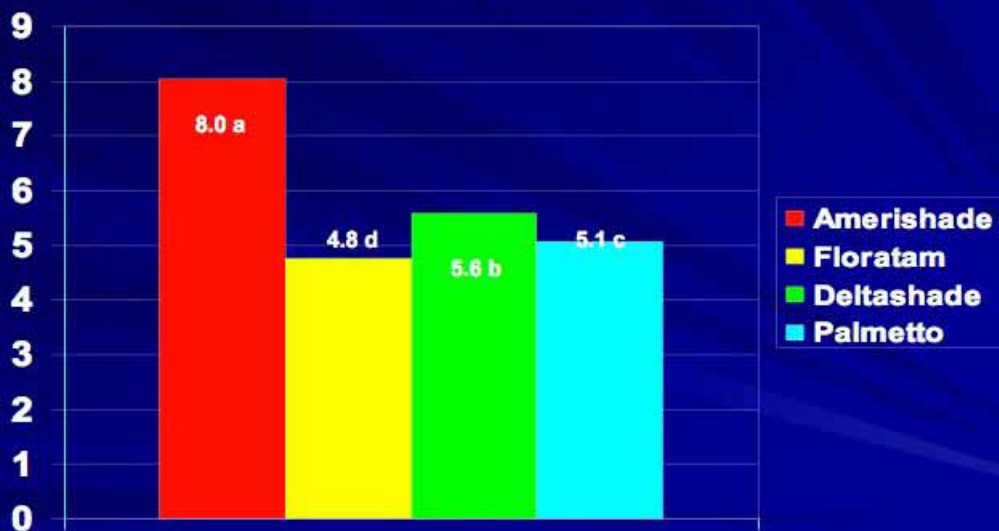
Weekly Quality Scores 70% Shade



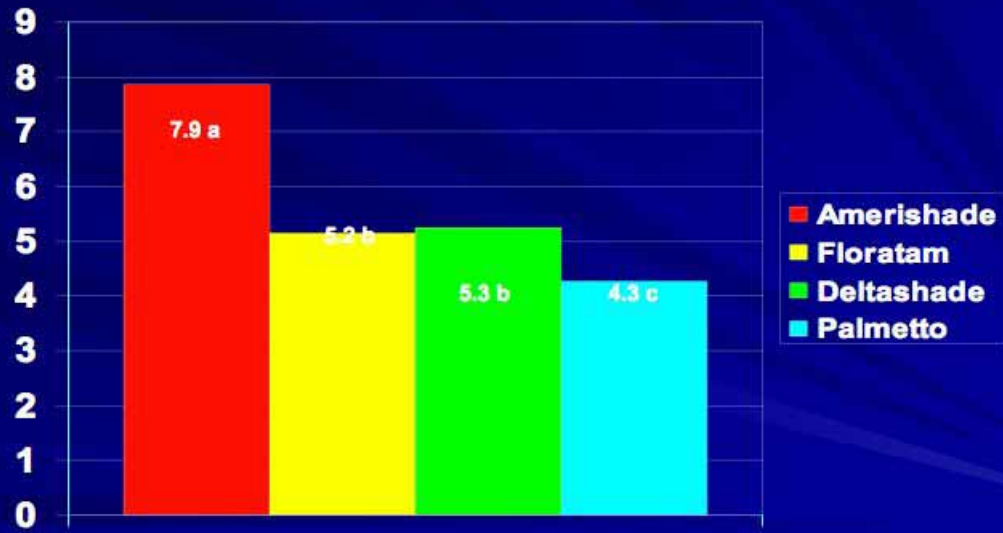
Seasonal Quality Full Sun



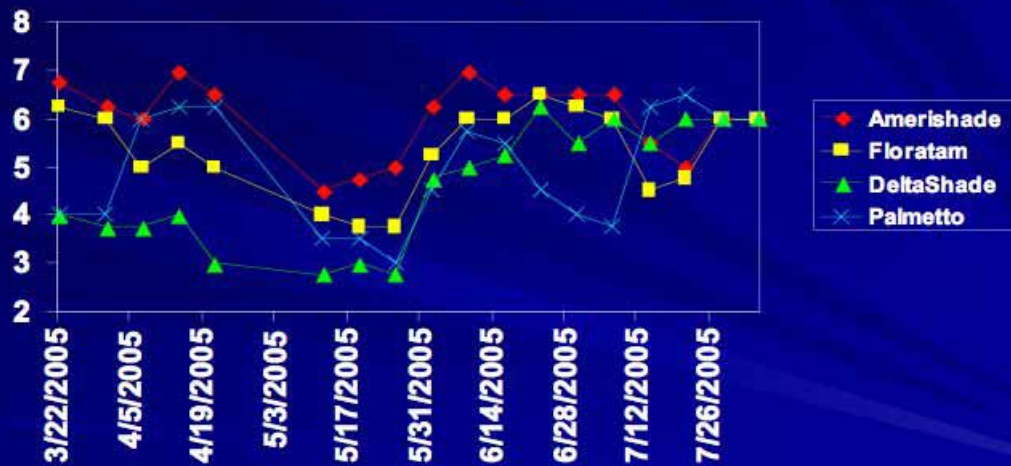
Seasonal Quality 30% Shade



Seasonal Quality Scores Shade Level 3



Weekly Color Scores 70% Shade



Seasonal Density 70% Shade

