



## In this Issue

In this issue of the quarterly Environmental Turf, Inc. newsletter you will find:

- Tournament News: Aloha® Shines at Pro Soccer Tournament in Venezuela
- Research: UltimateFlora™ Zoysia Demonstrates Drought Resistance
- Research: UltimateFlora™ Zoysia & PristineFlora™ Zoysia Rate Better Turf Quality, Color & Density
- Awards & Honors: SeaDwarf® & Aloha® Help Golf Resort Win Environmental Award
- Testimonial: SeaDwarf® & Aloha® Gain Sports Turf Fans

## TOURNAMENT NEWS

### Aloha® Shines at Pro Soccer Tournament in Venezuela

GOAL! Some of the best soccer players in the Americas took the field, grassed with Aloha® Seashore Paspalum, during the 2007 Copa America Cup this past summer held in Venezuela.

The Aloha® sports field was installed at the *Estadio Metropolitano de Futbol de Lara*, a stadium in the city of Barquisimeto that seats more than 40,000 fans. The field grassed with Aloha® was widely regarded “as the best field in the Cup” by the Venezuelan Soccer Association, and the local and international media, according to Nicolas Fraino Torrealba, field supervisor for Organizacion AFF. Fraino’s company installed and maintains the stadium’s turf. His father, Alberto Fraino Fuentes, was architect on the project.

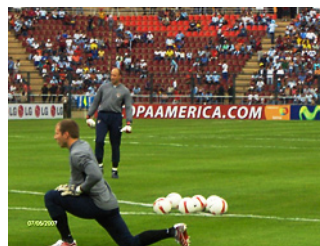
“During the games, the development of the grass was excellent,” said Nicolas Fraino. “It didn’t suffer any damage or any detachment in the turf after hard play. Even more, before the third game it rained hard for three straight hours and the field was in perfect condition.”

Equally impressive, according to Fraino the turf was planted less than two months prior to the event.

The Aloha® field was utilized for two eliminatory games and a quarterfinal game during the tournament. Teams from the USA, Columbia, Argentina, Paraguay and Peru played on the Aloha® Seashore Paspalum surface.



Nick Fraino at the field



The Aloha® field in use during Copa America Cup



Aloha® professional sports field

## Industry Insights

“Seashore Paspalum stripes up like ryegrass when you mow it. It stripes up like Bentgrass on a putting green.”

“Seashore Paspalum goes completely dormant (in Florence, South Carolina) but this grass is one of the earliest to green up.”

“The more you cut it and groom it, the tighter it gets.”

“It’s quick to develop rhysomes.”

“One advantage to Seashore Paspalum is in nematodes. Bermudagrass and Bentgrass are very susceptible. This grass seems to be more tolerant of nematodes because of its very strong root system. The nematodes may be there but this grass seems unaffected.”

“I think we’re going to see more Seashore Paspalum in South Carolina.”

Dr. Bruce Martin, Professor & Interim Center Director, Clemson University, speaking about Seashore Paspalum at the Turgrass Field Day on Tuesday, August 21, 2007, at the Pee Dee Research & Education Center, Clemson University, Florence, South Carolina



## RESEARCH

### UltimateFlora™ Zoysia Demonstrates Drought Resistance

UltimateFlora™ Zoysia will survive a drought.

That was the finding of a drought tolerance demonstration conducted by Dr. Bryan Unruh in June at the University of Florida in Milton.

In a non-replicated test, Dr. Unruh and Assistant Researcher Rex Lawson tested UltimateFlora™ Zoysia, Palmetto® St. Augustine, Meyer Zoysia and Common Centipede to see how many days the turfgrasses could go without any irrigation.

Five sets of the grasses were put into pots. Each set had a different water regimen. Water was turned off at intervals of 13-days prior to the field day demonstration, 10-days prior, 7-days prior, 4-days prior, 2-days prior, and zero-days prior in that it was watered every day up to the day of the demonstration.

As expected, the sets with the most water faired best and stayed green. It was at the 10-day interval with no water that the results became evident.

At the 10-day interval, Dr. Unruh said, "the UltimateFlora™ Zoysia looked better than the St. Augustine."

Dr. Unruh explained that the UltimateFlora™ Zoysia held up so much better because of the grasses' built-in "self defense mechanism." The physiology of the leaf blade "rolls up like a straw" and traps moisture in the leaf tissue, he said.

At 13-days, the UltimateFlora™ Zoysia was turning brown. But rather than a sign of impending death, Dr. Unruh said the brown color was a symptom of the grass "slipping into a dormant state."

What this means for drought situations is that if UltimateFlora™ Zoysia were to go 13 days with no water at all, it would not die. Rather, it would go dormant and wait for irrigation to bring back its green color.

Pointing to a tray of UltimateFlora™ Zoysia, Unruh said, "From a defense mechanism, this one here will survive a drought."



10 days no water & Ultimate-Flora™ Zoysia is still green



13 days no water before demo, UltimateFlora™ Zoysia in big tray, going into 'self defense' mode for drought resistance, in rear is Palmetto® St. Augustine, in middle pot is Meyer zoysia and in front pot is Common Centipede

## Industry Insights

"In home lawns, the Zoysiagrass grows slower. The homeowner may not have to mow it as often."

Brian Schwartz, Ph.D. Candidate, University of Florida, speaking about Zoysiagrass at the 55th annual Florida Turfgrass Association Conference & Show on Wednesday, September 12, 2007, Bonita Springs, Florida

"Zoysiagrass will persist through long-term drought."

"If maintained at 1.5-inches, Zoysia can be mowed every 10 to 14 days."

"Reel and rotary mowers can easily be used on Zoysiagrasses."

Dr. Kevin Kenworthy, Assistant Professor, University of Florida, speaking about Zoysiagrass at the 55th annual Florida Turfgrass Association Conference & Show on Wednesday, September 12, 2007, Bonita Springs, Florida

## Where to Buy

### UltimateFlora™ Zoysia in Florida

**Avon Park:** Emerald Island Turf

**Aracadia:** Dynasty Turf

**Bradenton:** Florida NU-Turf

**Charlotte County:** Berry Turf

**Gainesville Area:** Best Florida Sod

**Indiantown:** Indian Sun Turf

**Port St. Lucie:** Kennedy Groves

**Sebring:** Gulf Kist Sod

**Vero Beach:** Gulf Kist Sod



## UltimateFlora™ Zoysia & PristineFlora™ Zoysia Rate Better Turf Quality, Color & Density

In 12 out of 18 comparative categories, UltimateFlora™ Zoysia rates better than Empire® Zoysia in turf quality, color and density. The data was presented at the University of Florida turfgrass field day at the Citra Research Center in July. In another four comparative measurements, UltimateFlora™ Zoysia tied with Empire® Zoysia in color and density categories.

The rankings evaluated turf quality, color, and density at 1.5 lb, 3.5 lb, and 5.5 lb per 1,000 sq. ft. fertility rates. The grasses were rated at one-inch and 2-inch heights of cut.

In the rankings of fine textured zoysiagrasses, PristineFlora™ Zoysia rated better than Diamond® Zoysia and Zeon® Zoysia.

Dr. Kevin Kenworthy and Brian Schwartz, Ph.D. Candidate, presented the data.



Dr. Kevin Kenworthy at Zoysia test plots



Mowing height tests on UltimateFlora™ Zoysia

## ☉ Lawn Grasses from Environmental Turf

### UltimateFlora™ Zoysia

- Less Water
- Less Fertilizer
- Chinch Bug Resistant
- Soft Underfoot
- Luxurious Look & Feel

### Hammock™ Centipede

- Extremely Low Maintenance
- Less Mowing
- Less Fertilizer
- Less Water

### DeltaShade™ St. Augustine

- Shade Tolerant
- Cold Tolerant
- Semi-Dwarf

## ☉ Where To Buy SeaDwarf®

**California:** Am-Sod, Inc.

**Caribbean:** Lucks Sales Group

**Florida:** Emerald Island Turf

**Georgia:** Lucks Sales Group, Phillip Jennings Turf Farms, Pike Creek Turf Inc.

**Hawaii:** Ali'i Turf

**South Carolina:** Modern Turf

**Brazil:** Green Grass

**China:** Sino-Green Turf Co., Ltd.

**Mexico:** Berentsen Jardinaria, SA de CV.

**Panama:** Jardines Urbanos, SA

## AWARDS & HONORS

### SeaDwarf® & Aloha® Help Golf Resort Win Environmental Award

Fripp Island Golf & Beach Resort in South Carolina was awarded the 2007 Golf Industry Innovation Award for displaying ingenuity in designing an environmentally friendly golf course landscape.

The environmentally friendly properties of the SeaDwarf® greens and Aloha® tees, fairways and roughs at Fripp Island's Ocean Point Golf Links contributed to the resort winning the award, said Danny Robinson, CFO of Fripp Island.

"We believe it's important to recognize the most exciting ideas in our industry and celebrate their creators," said Ramón Muñoz, golf division president of Textron Financial, the company that sponsors the award. "That's why we're recognizing the extraordinary accomplishments of the Fripp Island Golf & Beach Resort. The course leaders devised, imparted, and are reaping the benefits of an innovative and environmentally friendly course design, and we wish them continued success."

(Continued...)



Superintendent Kevin Lashley



Aloha® tee box and fairway at Fripp Island Resort



Superintendent Kevin Lashely said the drought tolerance of the SeaDwarf® and Aloha® Seashore Paspalum at his facility have meant the difference between having a green golf course or a brown one. He said getting enough water to the barrier island to irrigate the golf course is a challenge. The little water he has available is effluent. Wind off the ocean often interferes with sprinkler patterns on the golf course. Plus, a half-dozen holes located on the Atlantic Ocean are frequently inundated with salt spray. The SeaDwarf® and Aloha® turfgrasses at Ocean Point hold up to it all.

Ocean Point supports 30,000 rounds annually with golf played year-round. As Seashore Paspalum will go dormant in South Carolina's winter, Lashley overseeds greens with Poa Trivialis at a rate of 12-to-15 lbs. per 1000 sq. ft. Fairways and tees are overseeded with ryegrass at 300 lbs. per acre. "I haven't had any issues" with transitioning out of the overseed, Lashley reports. The Seashore Paspalum "just pushes through and pushes the ryegrass out."

Todd Stratton, resident pro at Ocean Point Golf Links said he frequently hears positive comments about the course and the grass.

"It stays consistently solid all year long," Stratton said. "Playability is excellent. You never have to touch your lie. It sets up beautifully. The greens are pure throughout. It's going to go where you aim it."

For more information or to play Ocean Point Golf Links at Fripp Island Resort, visit: [www.frippislandresort.com](http://www.frippislandresort.com).



SeaDwarf® green located directly on the Atlantic Ocean



SeaDwarf® green & Aloha® fairway at Fripp Island Resort



Central Winds Park

## Golf & Sports Grasses from Environmental Turf

### Premium SeaDwarf® Seashore Paspalum

- Only TRUE DWARF Paspalum
- Greens putt true, virtually no grain
- Use tee-to-green
- Drought Tolerant
- Salt Tolerant
- Less Water
- Less Fertilizer
- Irrigate with varied water sources

### Aloha® Seashore Paspalum

- Heals Fast
- Wear Tolerant Sports Fields
- Longer Roughs
- Deeper Green Color Than SeaDwarf®
- Drought Tolerant
- Salt Tolerant
- Less Water
- Less Fertilizer
- Irrigate with varied water sources

### PristineFlora™ Zoysia

- Shade Tolerant
- Golf tees, fairways
- Croquet Lawns
- High-end lawns
- Less Water
- Chinch Bug Resistant

## TESTIMONIAL

### SeaDwarf® & Aloha® Gain Sports Turf Fans

SeaDwarf® & Aloha® produce sports fields that are "great to play on."

That was the assessment from Chuck Pula and Alan Greene of the City of Winter Springs Parks Department at a seminar they conducted on Seashore Paspalum sports field use. The event was held August 30th during the 2007 Florida Recreation & Park Association's Annual Conference held in Orlando.

(Continued...)



At the award-winning Central Winds Park in the City of Winter Springs, Pula and Greene maintain 27-acres of SeaDwarf® Seashore Paspalum practice fields. Those practice fields, Pula said, have become the “preferred fields” at the complex, “even after flooding.”

Pula said he’s genuinely impressed with SeaDwarf®’s durability on the practice fields.

“We like the grass. We knew the practice fields were going to take a beating. They are played on every day, several times a day and we knew we needed a tougher grass,” Pula said. “We really were confident that this grass was a tough grass and would hold up very well to the type of abuse that we get on these practice fields. And it has.”

For any municipal facility, budget is always an issue. Pula said the SeaDwarf® helps him to reduce the amount of man-hours needed to mow the SeaDwarf® fields. In the winter when the growth rate of the SeaDwarf® slows down, combined with its dwarf nature, Pula said he’s enjoyed “four-and-a-half months of no mowing.”

Pula said he and his team use salt as an herbicide at Central Winds Park with good results. Using salt, Pula said, he’s achieved “same day control” on Dollar Weed.

He also attested to SeaDwarf®’s drought tolerance. “We don’t use half of our one million gallon allotment because it is so drought tolerant,” Pula said.

At Moss Park in Winter Springs, Greene said the city is using Aloha® at a playground and basketball facility. Results there have also been positive. “We’re very excited about the Aloha®,” Greene said.



Alan Greene & Chuck Pula at the seminar



SeaDwarf® Soccer Field

## Did You Know?

### The Cost of Water Continues to Rise: Low Water Grasses Needed Even More

In at least one city in the U.S., the cost of water is up by as much as 40-percent. The folks in Trenton, New Jersey, hold that unfortunate distinction. While not all cities are experiencing utility bill increases to the double-digit extreme, rising water costs now appear to be the norm. The average price of water rose 6-percent in the United States in the year ended July 1, 2007. The statistics were reported September 6, 2007, in the Orange County Register newspaper published in Santa Ana, California. In Los Angeles, water costs are up 20.8-percent. In Savannah, Georgia, water costs are up 11.4-percent. The article detailed a report from NUS Consulting Group that surveyed 51 water systems located throughout the country. Of the water systems surveyed, none reported a decrease in pricing. As water prices go up, it is expected that the demand for turfgrasses with low water use requirements will also continue to increase.

## Contact Us: Environmental Turf, Inc.



Environmental Turf

info@environmentalturf.com  
Phone: (863) 452-6595 • Fax: (863) 452-5079  
4366 E. Kinsey Road, Avon Park, FL 33825